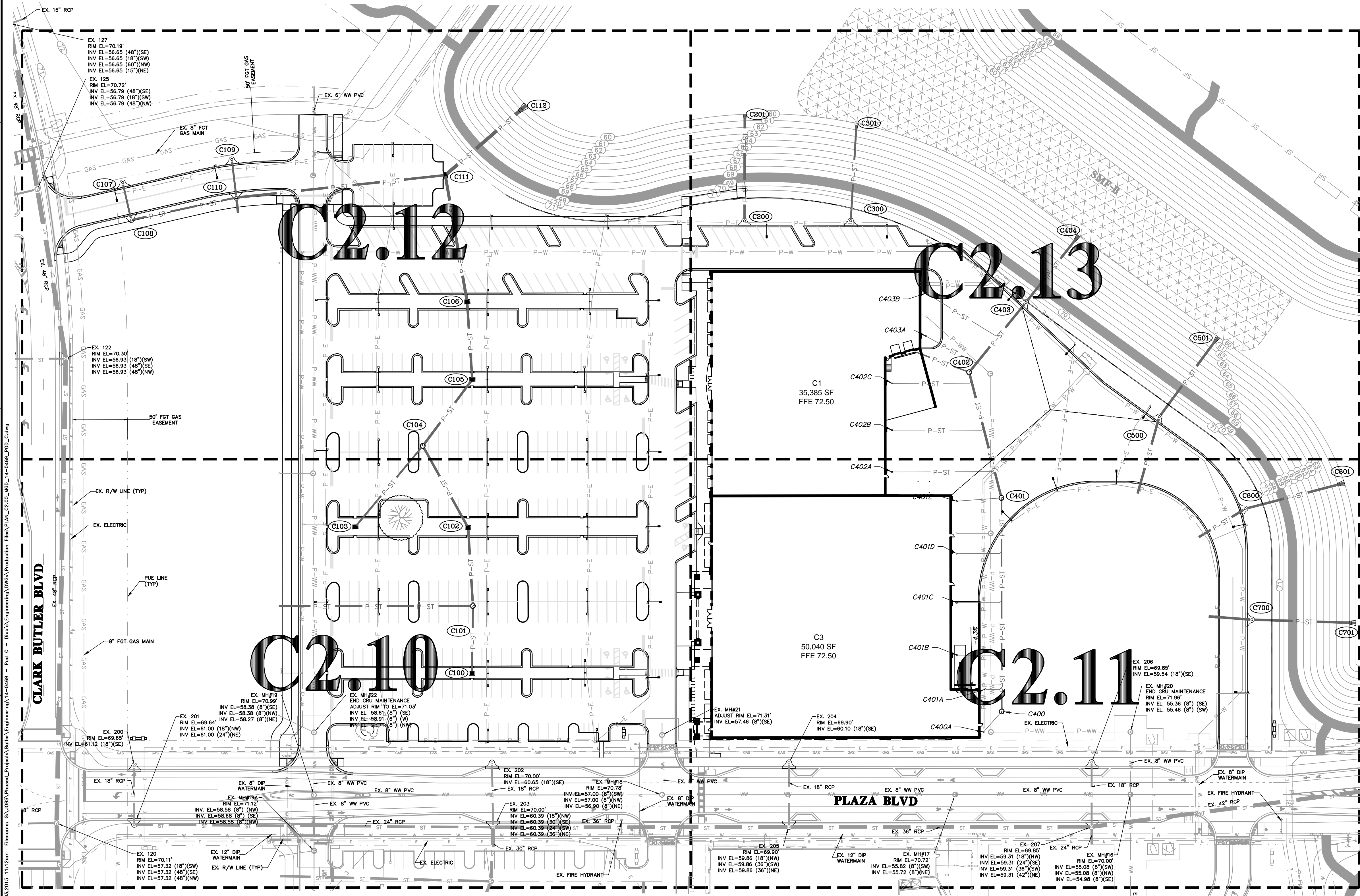


NOTE-  
1. REFER TO SHEETS C2.10 THROUGH C2.13 FOR DETAILED GRADING DRAINAGE PLANS.



STRUCTURE:	STRUCTURE TYPE	TOP	INVERT ELEV	PIPE DIA.	NORTHING & EASTING
C100	TYPE C INLET PER FDOT INDEX NO. 232	70.10'	61.71' NW	18"	N: 234564.88 E: 2640832.44
C101	MANHOLE PER FDOT INDEX NO. 200 & 201	71.55'	61.54' SE 61.54' NW	18" 24"	N: 234614.88 E: 2640796.43
C102	TYPE C INLET PER FDOT INDEX NO. 232	70.00'	61.39' NW 61.39' SE	24"	N: 234669.86 E: 2640750.20
C103	TYPE C INLET PER FDOT INDEX NO. 232	70.00'	61.49' N	18"	N: 234608.87 E: 2640666.61
C104	MANHOLE PER FDOT INDEX NO. 200 & 201	71.56'	61.26' S 61.26' SE	18" 24"	N: 234705.35 E: 2640672.22
C105	TYPE C INLET PER FDOT INDEX NO. 232	70.15'	61.12' S 61.12' NW	24"	N: 234781.11 E: 2640672.42
C106	TYPE C INLET PER FDOT INDEX NO. 232	70.22'	60.99' SE 60.99' NW	24" 30"	N: 234835.60 E: 2640626.20
C107	TYPE 4 CURB INLET WITH TYPE 'P' BOTTOM PER FDOT INDEX NO. 200 & 210	70.97'	64.94' SE	18"	N: 234735.42 E: 2640307.74
C108	TYPE 4 CURB INLET WITH TYPE 'P' BOTTOM PER FDOT INDEX NO. 200 & 210	70.97'	64.97' NE 64.97' NW	18" 18"	N: 234712.65 E: 2640334.33
C109	TYPE 4 CURB INLET WITH TYPE 'P' BOTTOM PER FDOT INDEX NO. 200 & 210	71.62'	64.73' SE	18"	N: 234811.90 E: 2640375.41
C110	TYPE 4 CURB INLET WITH TYPE 'P' BOTTOM PER FDOT INDEX NO. 200 & 210	71.62'	64.66' NW 64.40' SE 64.40' NE 64.66' SW	18" 24" 24" 18"	N: 234786.50 E: 2640359.49
C111	TYPE F INLET PER FDOT INDEX NO. 233	70.67'	60.81' S 60.81' N	30" 24"	N: 234916.87 E: 2640541.06
C112	36" MITERED END SECTION PER FDOT INDEX NO. 272	60.00'	S	36"	N: 235012.24 E: 2640562.54

STRUCTURE:	STRUCTURE TYPE	TOP	INVERT ELEV	PIPE DIA.	NORTHING & EASTING
C200	TYPE 4 CURB INLET WITH TYPE 'P' BOTTOM PER FDOT INDEX NO. 200 & 210	71.61'	61.00' NW	24"	N: 235046.46 E: 2640786.22
C201	18" MITERED END SECTION PER FDOT INDEX NO. 272	60.00'	SE	24"	N: 235125.08 E: 2640728.24
C300	TYPE 4 CURB INLET WITH TYPE 'P' BOTTOM PER FDOT INDEX NO. 200 & 210	71.54'	61.67' NW	18"	N: 235104.44 E: 2640864.39
C301	18" MITERED END SECTION PER FDOT INDEX NO. 272	60.00'	SE	18"	N: 235179.51 E: 2640815.35
C500	TYPE 4 CURB INLET WITH TYPE 'P' BOTTOM PER FDOT INDEX NO. 200 & 210	71.07'	60.71' S 60.71' N	24" 24"	N: 235128.57 E: 2641198.40
C501	30" MITERED END SECTION PER FDOT INDEX NO. 272	60.00'	S	24"	N: 235219.31 E: 2641198.14
C600	TYPE 4 CURB INLET WITH TYPE 'P' BOTTOM PER FDOT INDEX NO. 200 & 210	71.29'	60.84' NE 60.84' S	24" 24"	N: 235107.72 E: 2641311.83
C601	30" MITERED END SECTION PER FDOT INDEX NO. 272	60.00'	SW	24"	N: 235180.68 E: 2641570.69
C700	TYPE 4 CURB INLET WITH TYPE 'P' BOTTOM PER FDOT INDEX NO. 200 & 210	71.29'	60.95' NE 60.95' S	24" 24"	N: 235029.64 E: 2641377.18
C701	30" MITERED END SECTION PER FDOT INDEX NO. 272	60.00'	SW	24"	N: 235084.01 E: 2641455.43

STRUCTURE:	STRUCTURE TYPE	TOP	INVERT ELEV	PIPE DIA.	NORTHING & EASTING
C401	MANHOLE PER FDOT INDEX NO. 200 & 201	72.23'	63.44' SE 62.69' NW 64.02' SW	15" 24" 8"	N: 234982.72 E: 2641179.46
C401B	CLEANOUT W/ TRAFFIC LOAD BEARING COVER	69.96'	66.00' NE	8"	N: 234842.66 E: 2641179.32
C401C	CLEANOUT W/ TRAFFIC LOAD BEARING COVER	72.16'	68.50' NE	8"	N: 234881.20 E: 2641150.75
C401D	CLEANOUT W/ TRAFFIC LOAD BEARING COVER	72.35'	68.50' NE	8"	N: 234917.35 E: 2641123.92
C401E	CLEANOUT W/ TRAFFIC LOAD BEARING COVER	72.25'	68.50' NE	8"	N: 234955.90 E: 2641095.33
C402	MANHOLE PER FDOT INDEX NO. 200 & 201	71.48'	62.20' W 61.20' N 61.20' SE	12" 24" 24"	N: 235057.58 E: 2641034.15
C402A	CLEANOUT W/ TRAFFIC LOAD BEARING COVER	72.38'	64.07' NE	8"	N: 234942.11 E: 2641031.67
C402B	CLEANOUT W/ TRAFFIC LOAD BEARING COVER	71.86'	63.54' NE	8"	N: 234972.83 E: 2641008.86
C402C	CLEANOUT W/ TRAFFIC LOAD BEARING COVER	69.35'	62.95' NE	8"	N: 235007.24 E: 2640983.38
C403	TYPE 4 CURB INLET WITH TYPE 'P' BOTTOM PER FDOT INDEX NO. 200 & 210	71.05'	60.58' S 60.58' N	24" 24"	N: 235139.89 E: 2641037.83
C403A	CLEANOUT W/ TRAFFIC LOAD BEARING COVER	72.32'	62.65' E	8"	N: 235060.52 E: 2640982.61
C403B	CLEANOUT W/ TRAFFIC LOAD BEARING COVER	72.32'	62.55' E	8"	N: 235092.26 E: 2640959.35
C404	24" MITERED END SECTION PER FDOT INDEX NO. 272	60.00'	S	24"	N: 235217.72 E: 2641040.22

192 NW 76th Drive  
Gainesville, Florida 32607  
(882) 331-1976 / (882) 331-2476  
www.chw-inc.com  
est. 1988 FLORIDA  
CA-4075



1"=50'  
REPLY SCALE ON  
BASE SCALE OF  
ORIGINAL DRAWING  
0" MEANS SEE SHEET  
THIS SHEET, ADJUST  
SCALES ACCORDINGLY.

CONSTRUCTION/REVISIONS

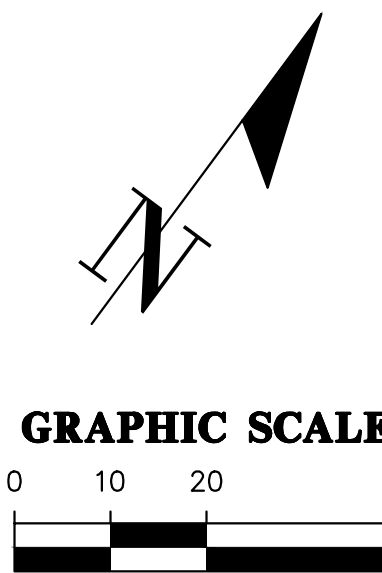
4/07/2015 90% CITY REVIEW & GRU SUBMITTAL  
6/02/2015 100% CITY REVIEW & GRU SUBMITTAL  
7/21/2015 CITY DO & GRU SUBMITTAL  
08/18/2015 CITY DO & GRU SUBMITTAL  
09/03/2015 100% CONSTRUCTION DOCUMENTS

BUTLER ENTERPRISES  
PROJECT: POD C AT BUTLER NORTH

CLIENT: BUTLER ENTERPRISES  
DESIGNER: HAS  
QUALITY CONTROL: R/W  
PROJECT NUMBER: 14-0469

ROBERT J. WALPOLE

FL PE No. 58206  
SHEET NO. C2.00



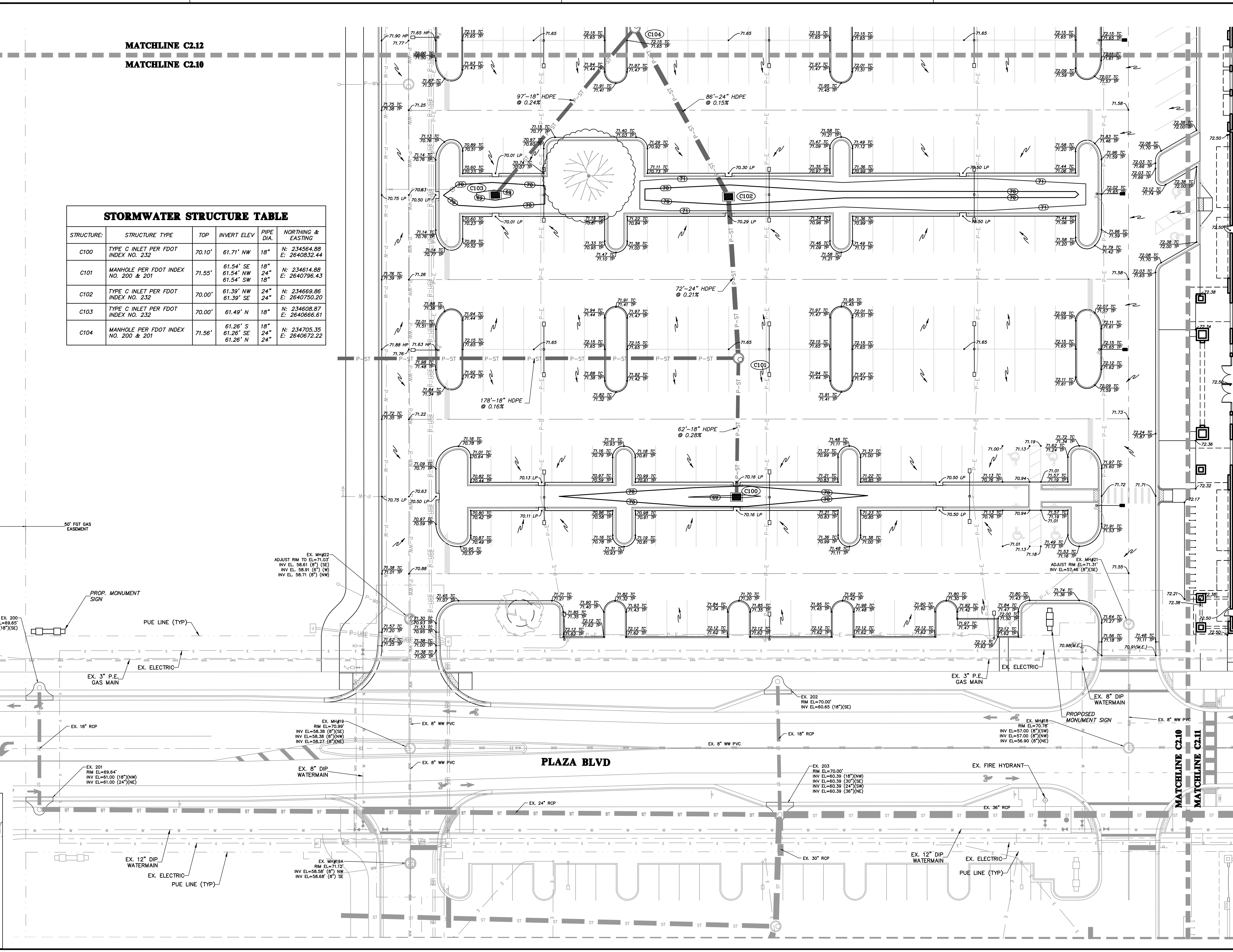
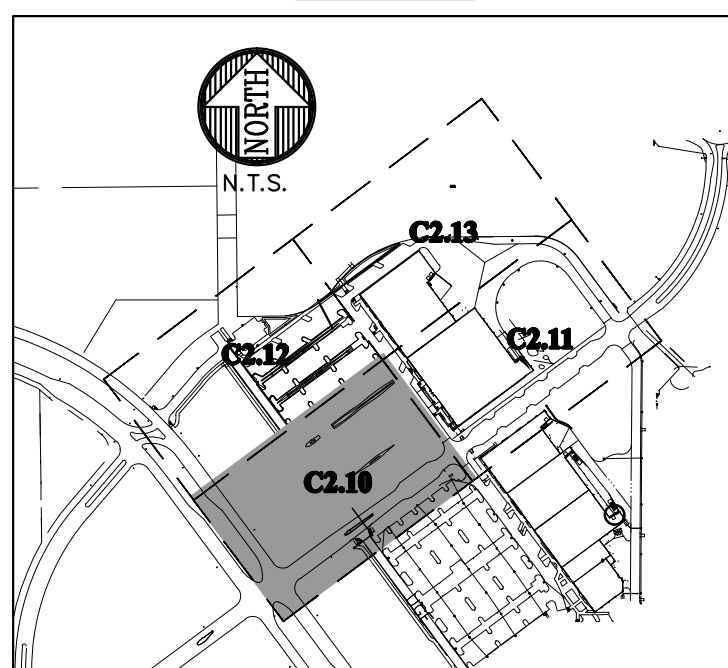
**STORMWATER STRUCTURE TABLE**

STRUCTURE	STRUCTURE TYPE	TOP	INVERT ELEV	PIPE DIA.	NORTHING & EASTING
C100	TYPE C INLET PER FDOT INDEX NO. 232	70.10'	61.71' NW	18"	N: 234564.88 E: 2640832.44
C101	MANHOLE PER FDOT INDEX NO. 200 & 201	71.55'	61.54' SE 61.54' NW 61.54' SW	18"	N: 234614.88 E: 2640796.43
C102	TYPE C INLET PER FDOT INDEX NO. 232	70.00'	61.39' NW 61.39' SE	24"	N: 234669.86 E: 2640750.20
C103	TYPE C INLET PER FDOT INDEX NO. 232	70.00'	61.49' N	18"	N: 234608.87 E: 2640666.61
C104	MANHOLE PER FDOT INDEX NO. 200 & 201	71.56'	61.26' S 61.26' SE 61.26' N	24"	N: 234705.35 E: 2640672.22

**CLARK BUTLER BLVD**

**PLAZA BLVD**

**KEY MAP**



192 NW 76th Drive  
Gainesville, Florida 32607  
(852) 331-1976 / (852) 331-2476  
www.chw-inc.com  
est. 1988 FLORIDA  
CA-15075

**CHW**  
Professional Consultants

1"=20'  
VERTICAL SCALE  
BASED ON THE  
ORIGINAL DRAWING  
0' TO 10' VERTICAL SCALE  
THIS SHEET, ADJUST  
SCALES ACCORDINGLY.

CONSTRUCTION REVISIONS

4/07/2015 90% CITY REVIEW & GRU SUBMITTAL  
6/02/2015 100% CITY REVIEW & GRU SUBMITTAL  
7/21/2015 CITY DO & GRU SUBMITTAL  
08/16/2015 CITY DO & GRU SUBMITTAL  
09/03/2015 100% CONSTRUCTION DOCUMENTS

CLIENT: BUTLER ENTERPRISES  
PROJECT: POD C AT BUTLER NORTH  
SHEET TITLE: DETAILED GRADING AND DRAINAGE PLAN

DESIGNER: D.J.S.  
CHECKER: H.A.S.  
QUALITY CONTROL: R.W.  
PROJECT NUMBER: 14-0469

ROBERT J. WALPOLE

FL PE No. 58206  
SHEET NO. C2.10

MATCHLINE C2.13  
MATCHLINE C2.11

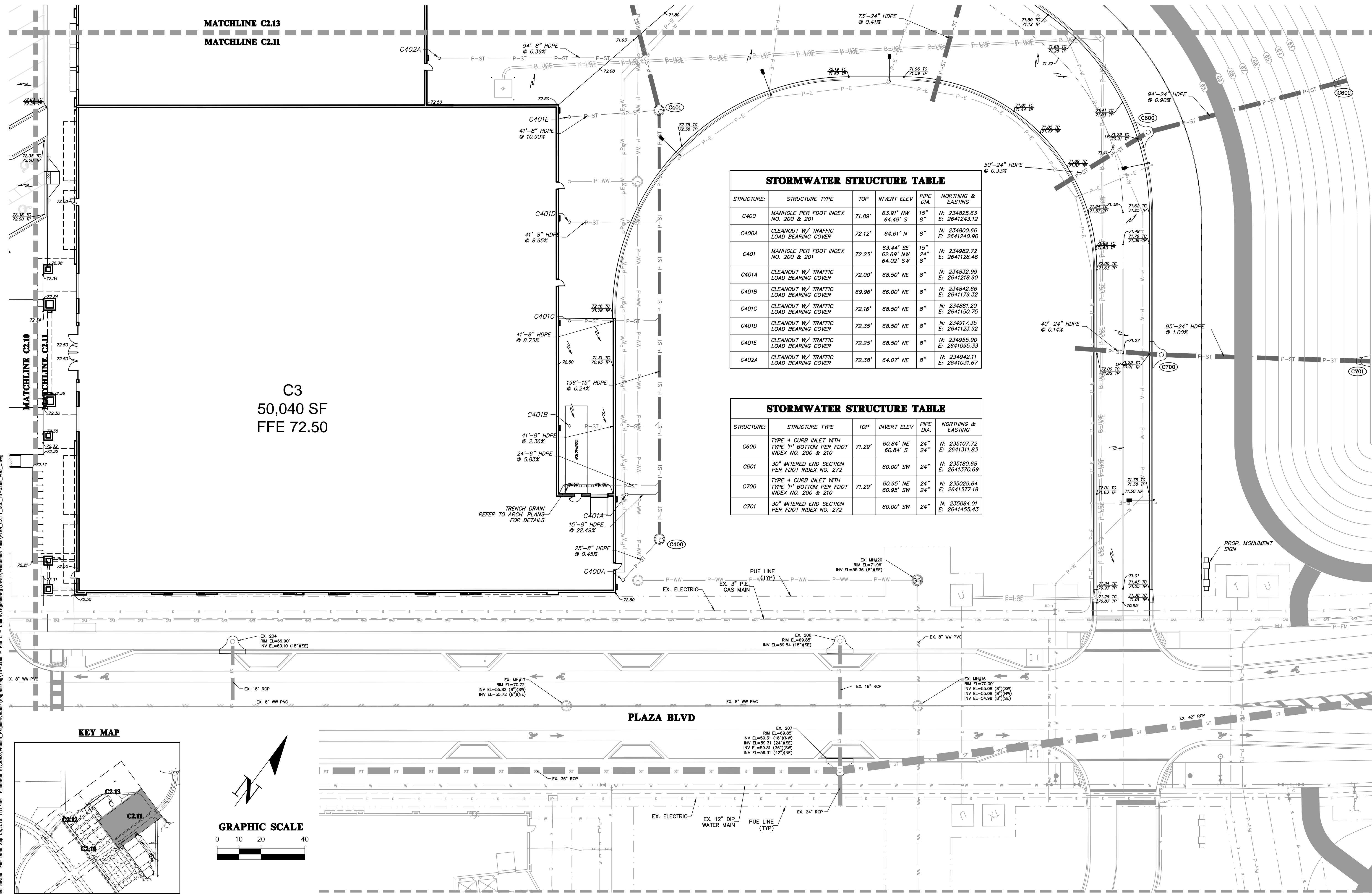
C3  
50,040 SF  
FFE 72.50

**STORMWATER STRUCTURE TABLE**

STRUCTURE:	STRUCTURE TYPE	TOP	INVERT ELEV	PIPE DIA.	NORTHING & EASTING
C400	MANHOLE PER FDOT INDEX NO. 200 & 201	71.89'	63.91' NW 64.49' S	15"	N: 234825.63 E: 2641243.12
C400A	CLEANOUT W/ TRAFFIC LOAD BEARING COVER	72.12'	64.61' N	8"	N: 234800.66 E: 2641240.90
C401	MANHOLE PER FDOT INDEX NO. 200 & 201	72.23'	63.44' SE 62.69' NW 64.02' SW	15" 24" 8"	N: 234982.72 E: 2641126.46
C401A	CLEANOUT W/ TRAFFIC LOAD BEARING COVER	72.00'	68.50' NE	8"	N: 234832.99 E: 2641218.90
C401B	CLEANOUT W/ TRAFFIC LOAD BEARING COVER	69.96'	66.00' NE	8"	N: 234842.66 E: 2641179.32
C401C	CLEANOUT W/ TRAFFIC LOAD BEARING COVER	72.16'	68.50' NE	8"	N: 234881.20 E: 2641150.75
C401D	CLEANOUT W/ TRAFFIC LOAD BEARING COVER	72.35'	68.50' NE	8"	N: 234917.35 E: 2641123.92
C401E	CLEANOUT W/ TRAFFIC LOAD BEARING COVER	72.25'	68.50' NE	8"	N: 234955.90 E: 2641095.33
C402A	CLEANOUT W/ TRAFFIC LOAD BEARING COVER	72.38'	64.07' NE	8"	N: 234942.11 E: 2641031.67

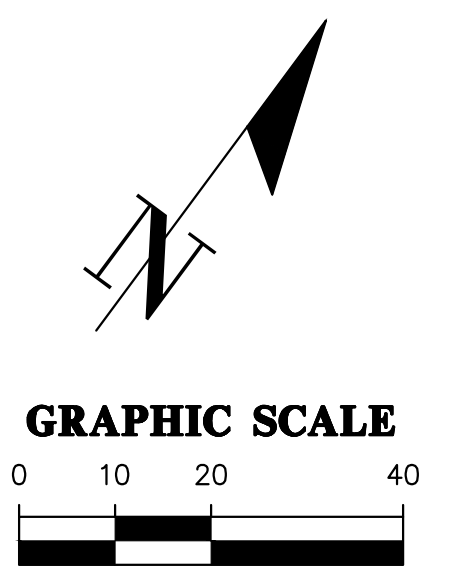
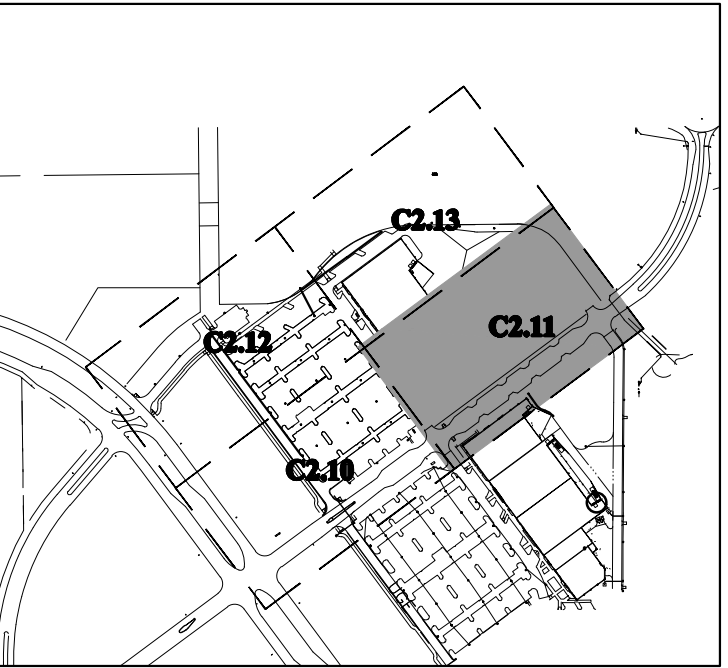
**STORMWATER STRUCTURE TABLE**

STRUCTURE:	STRUCTURE TYPE	TOP	INVERT ELEV	PIPE DIA.	NORTHING & EASTING
C600	TYPE 4 CURB INLET WITH TYPE 'P' BOTTOM PER FDOT INDEX NO. 200 & 210	71.29'	60.84' NE 60.84' S	24"	N: 235107.72 E: 2641311.83
C601	30° MITERED END SECTION PER FDOT INDEX NO. 272	71.29'	60.00' SW	24"	N: 235180.68 E: 2641370.69
C700	TYPE 4 CURB INLET WITH TYPE 'P' BOTTOM PER FDOT INDEX NO. 200 & 210	71.29'	60.95' NE 60.95' SW	24"	N: 235029.64 E: 2641377.18
C701	30° MITERED END SECTION PER FDOT INDEX NO. 272	71.29'	60.00' SW	24"	N: 235084.01 E: 2641455.43



PLAZA BLVD

KEY MAP



192 NW 76th Drive  
Gainesville, Florida 32607  
(882) 331-1976 / (882) 331-2476  
www.chw-inc.com  
est. 1988 FLORIDA  
CA-5075

**CHW**  
Professional Consultants

SCALE: 1"=20'  
REFER TO SHEET C2.11 FOR  
BASE SCALE ON  
ORIGINAL DRAWING  
0.90% SLOPE  
THIS SHEET, ADJUST  
SCALES ACCORDINGLY.

CONSTRUCTION/REV. REVISIONS

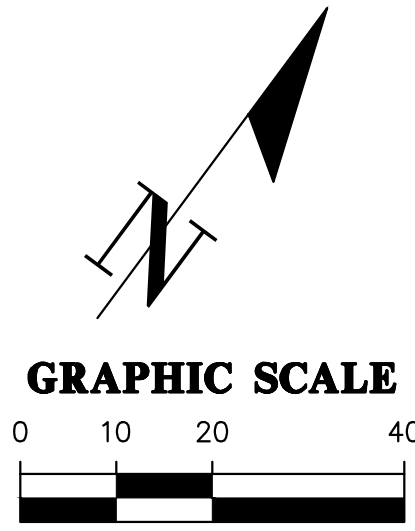
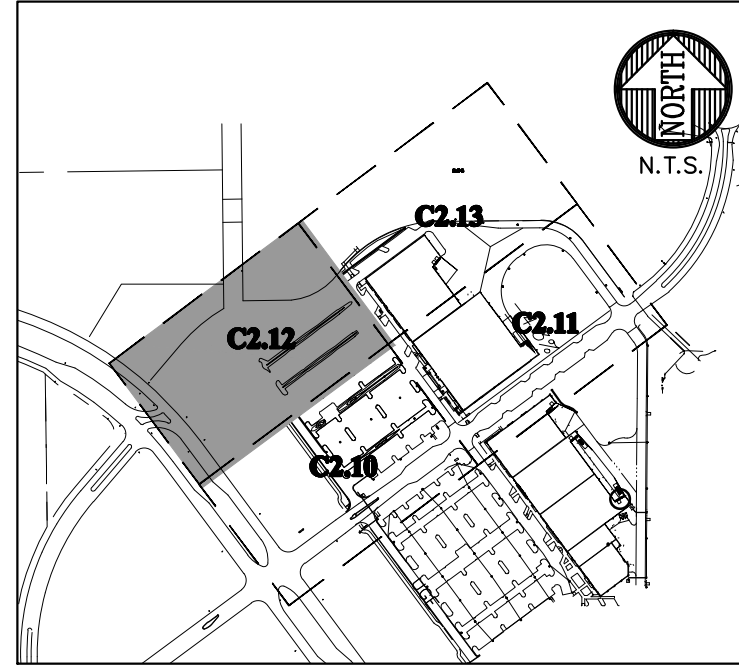
CLIENT: BUTLER ENTERPRISES  
PROJECT: POD C AT BUTLER NORTH  
SHEET TITLE: DETAILED GRADING AND DRAINAGE PLAN

DESIGNER: HAS  
QUALITY CONTROL: R/W  
PROJECT NUMBER: 14-0469

RESUBMITTALS:  
4/07/2015 90% CITY REVIEW & GRU SUBMITTAL  
6/02/2015 100% CITY REVIEW & GRU SUBMITTAL  
7/21/2015 CITY DO & GRU RESUBMITTAL  
08/18/2015 CITY DO & GRU RESUBMITTAL  
09/03/2015 100% CONSTRUCTION DOCUMENTS

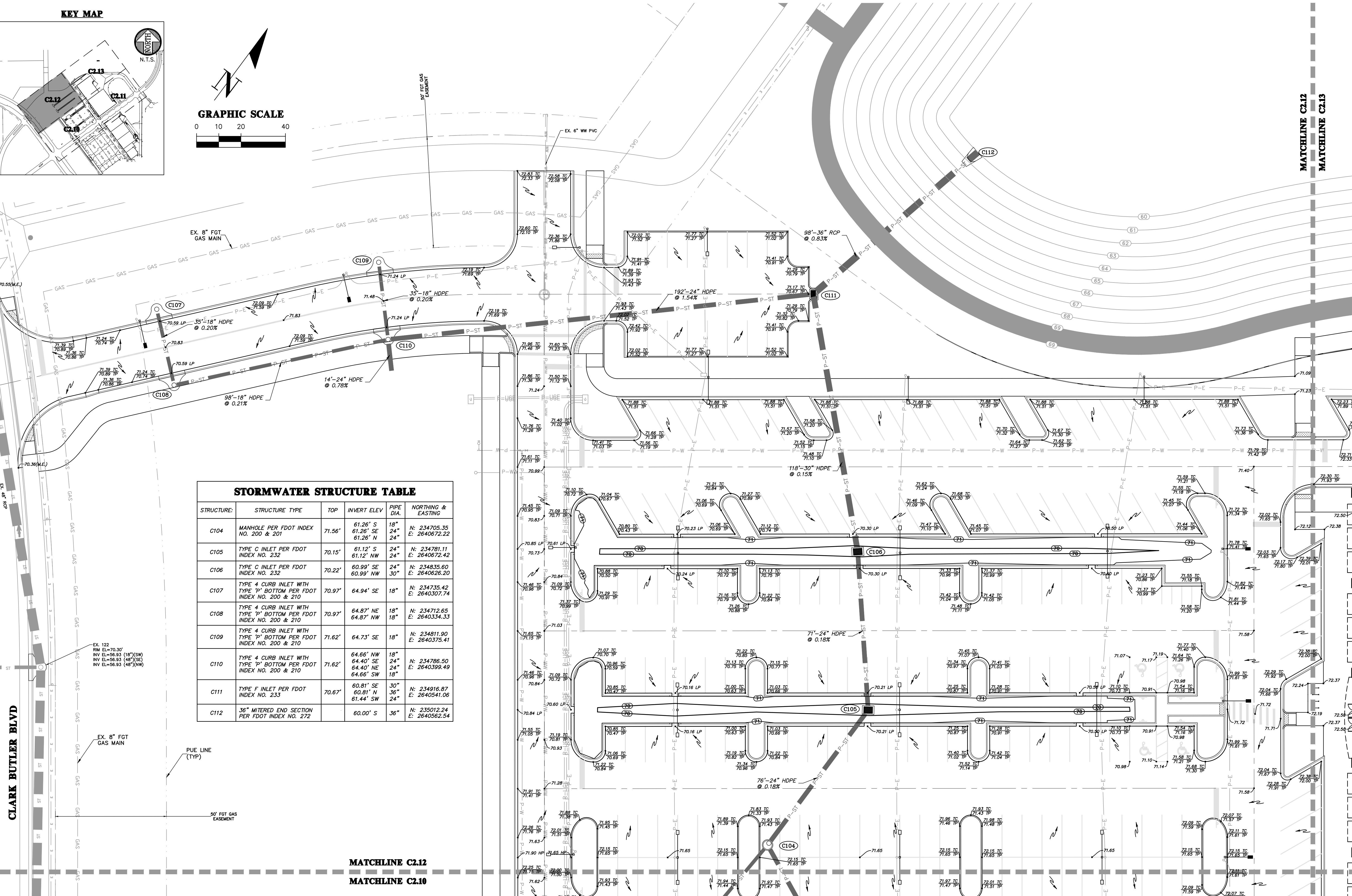
FL PE No. 58206  
SHEET NO. C2.11

**KEY MAP**



STRUCTURE:	STRUCTURE TYPE	TOP	INVERT ELEV	PIPE DIA.	NORTHING & EASTING
C104	MANHOLE PER FDOT INDEX NO. 200 & 201	71.56'	61.26' S 61.26' SE 61.26' N	18" 24"	N: 234705.35 E: 2640672.22
C105	TYPE C INLET PER FDOT INDEX NO. 232	70.15'	61.12' S 61.12' NW	24" 24"	N: 234781.11 E: 2640672.42
C106	TYPE C INLET PER FDOT INDEX NO. 232	70.22'	60.99' SE 60.99' NW	24" 30"	N: 234835.60 E: 2640626.20
C107	TYPE 4 CURB INLET WITH TYPE 'P' BOTTOM PER FDOT INDEX NO. 200 & 210	70.97'	64.94' SE	18"	N: 234735.42 E: 2640307.74
C108	TYPE 4 CURB INLET WITH TYPE 'P' BOTTOM PER FDOT INDEX NO. 200 & 210	70.97'	64.87' NE 64.87' NW	18" 18"	N: 234712.65 E: 2640334.33
C109	TYPE 4 CURB INLET WITH TYPE 'P' BOTTOM PER FDOT INDEX NO. 200 & 210	71.62'	64.73' SE	18"	N: 234811.90 E: 2640375.41
C110	TYPE 4 CURB INLET WITH TYPE 'P' BOTTOM PER FDOT INDEX NO. 200 & 210	71.62'	64.66' NW 64.40' SE 64.40' NE 64.66' SW	18" 24" 24" 18"	N: 234786.50 E: 2640399.49
C111	TYPE F INLET PER FDOT INDEX NO. 233	70.67'	60.81' SE 60.81' N 61.44' SW	30" 36" 24"	N: 234916.87 E: 2640541.06
C112	36" MITERED END SECTION PER FDOT INDEX NO. 272	70.00'	60.00' S	36"	N: 235012.24 E: 2640562.54

**CLARK BUTLER BLVD**



**CH2M HILL**  
 Professional Consultants  
 192 NW 76th Drive  
 Gainesville, Florida 32607  
 (852) 351-1976 / (852) 351-2476  
 www.ch2m.com  
 est. 1988 FLORIDA  
 CA-5075

SCALE: 1"=20'  
 REFER TO SHEET C2.10 FOR  
 BASIS OF DESIGN AND  
 ORIGINAL DRAWING  
 0. ALL DIMENSIONS ARE IN FEET  
 UNLESS OTHERWISE NOTED  
 THIS SHEET SHALL BE ADJUSTED  
 TO FIT THE SHEET SIZES  
 SCALES ACCORDINGLY.

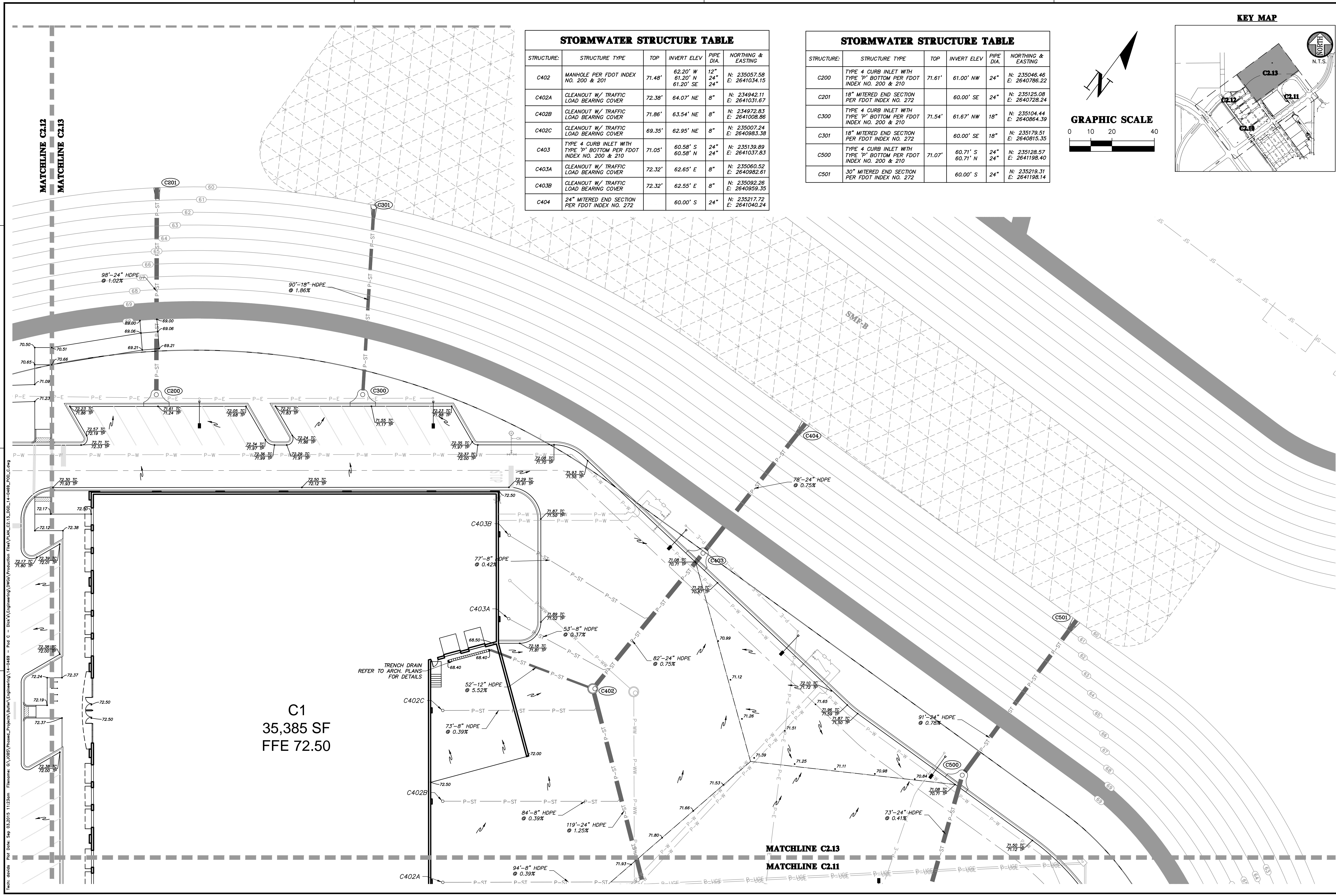
SUBMITTALS:  
 4/07/2015 90% CITY REVIEW & GRU SUBMITTAL  
 6/02/2015 100% CITY REVIEW & GRU SUBMITTAL  
 7/21/2015 CITY DO & GRU SUBMITTAL  
 08/18/2015 CITY DO & GRU SUBMITTAL  
 09/03/2015 100% CONSTRUCTION DOCUMENTS

CLIENT: BUTLER ENTERPRISES  
 PROJECT: POD C AT BUTLER NORTH  
 SHEET TITLE: DETAILED GRADING AND DRAINAGE PLAN

DESIGNER: DLS  
 CHECKER: HAS  
 QUALITY CONTROL: R/W  
 PROJECT NUMBER: 14-0469  
 SHEET NUMBER: 14-0469

RESUBMITTED BY: ROBERT J. WALPOLE

FL PE No. 58206  
 SHEET NO.: **C2.12**

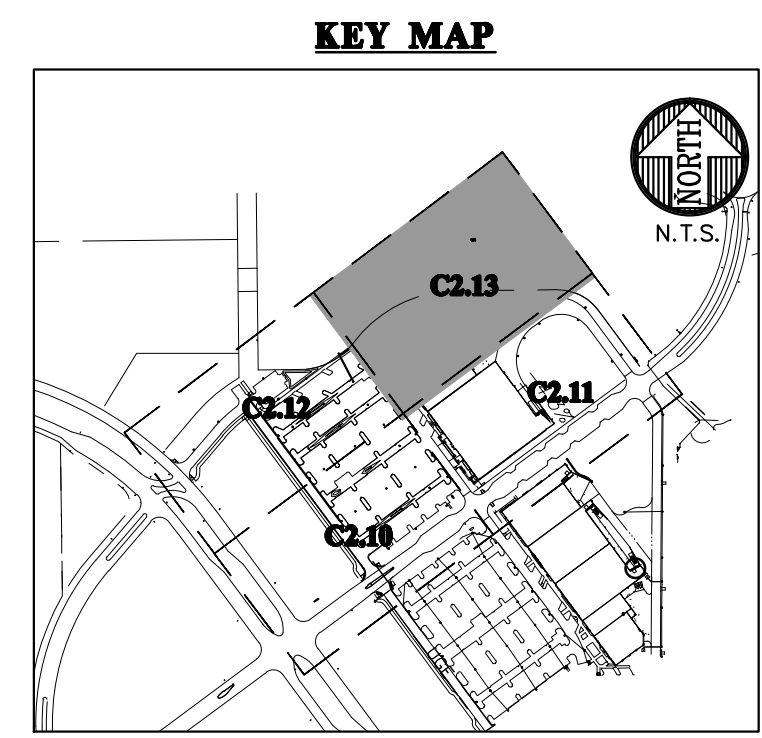
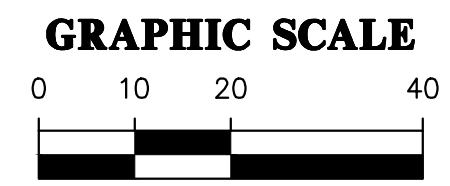


**STORMWATER STRUCTURE TABLE**

STRUCTURE	STRUCTURE TYPE	TOP	INVERT ELEV	PIPE DIA.	NORTHING & EASTING
C402	MANHOLE PER FDOT INDEX NO. 200 & 210	71.48'	62.20' W 61.20' N 61.20' SE	12" 24"	N: 235057.58 E: 2641034.15
C402A	CLEANOUT W/ TRAFFIC LOAD BEARING COVER	72.38'	64.07' NE	8"	N: 234942.11 E: 2641031.67
C402B	CLEANOUT W/ TRAFFIC LOAD BEARING COVER	71.86'	63.54' NE	8"	N: 234972.83 E: 2641008.86
C402C	CLEANOUT W/ TRAFFIC LOAD BEARING COVER	69.35'	62.95' NE	8"	N: 235007.24 E: 2640983.38
C403	TYPE 4 CURB INLET WITH TYPE 'P' BOTTOM PER FDOT INDEX NO. 200 & 210	71.05'	60.58' S 60.58' N	24" 24"	N: 235139.89 E: 2641037.83
C403A	CLEANOUT W/ TRAFFIC LOAD BEARING COVER	72.32'	62.65' E	8"	N: 235060.52 E: 2640982.61
C403B	CLEANOUT W/ TRAFFIC LOAD BEARING COVER	72.32'	62.55' E	8"	N: 235092.26 E: 2640959.35
C404	24" MITERED END SECTION PER FDOT INDEX NO. 272		60.00' S	24"	N: 235217.72 E: 2641040.24

**STORMWATER STRUCTURE TABLE**

STRUCTURE	STRUCTURE TYPE	TOP	INVERT ELEV	PIPE DIA.	NORTHING & EASTING
C200	TYPE 4 CURB INLET WITH TYPE 'P' BOTTOM PER FDOT INDEX NO. 200 & 210	71.61'	61.00' NW	24"	N: 235046.46 E: 2640786.22
C201	18" MITERED END SECTION PER FDOT INDEX NO. 272		60.00' SE	24"	N: 235125.08 E: 2640728.24
C300	TYPE 4 CURB INLET WITH TYPE 'P' BOTTOM PER FDOT INDEX NO. 200 & 210	71.54'	61.67' NW	18"	N: 235104.44 E: 2640864.39
C301	18" MITERED END SECTION PER FDOT INDEX NO. 272		60.00' SE	18"	N: 235179.51 E: 2640815.35
C500	TYPE 4 CURB INLET WITH TYPE 'P' BOTTOM PER FDOT INDEX NO. 200 & 210	71.07'	60.71' S 60.71' N	24" 24"	N: 235128.57 E: 2641198.40
C501	30" MITERED END SECTION PER FDOT INDEX NO. 272		60.00' S	24"	N: 235219.31 E: 2641198.14



Title: d:\projects\11233m - 14-0469 - Pod C - Butler Enterprises\11-233m - 14-0469 - Pod C - Butler Enterprises\11-233m - 14-0469 - Pod C.dwg  
 Date: Sep 03, 2015 11:23am  
 User: RJP

**C1**  
35,385 SF  
FFE 72.50

**MATCHLINE C2.13**  
**MATCHLINE C2.11**

CHM  
Professional Consultants  
192 NW 76th Drive  
Gainesville, Florida 32607  
(852) 351-1976 / (852) 351-2476  
www.chm-inc.com  
est. 1988 FLORIDA  
CA-5075

SCALES:  
 1" = 20'  
 REFER TO SHEET FOR  
 BAR SCALE ON  
 ORIGINAL DRAWING  
 0' 10' 20' 30' 40'  
 THIS SHEET MUST BE  
 PRINTED AT THE  
 SCALES ACCORDINGLY.

SUBMITTALS:  
 4/07/2015 90% CITY REVIEW & GRU SUBMITTAL  
 6/02/2015 100% CITY REVIEW & GRU SUBMITTAL  
 7/21/2015 CITY DO & GRU SUBMITTAL  
 08/16/2015 CITY DO & GRU SUBMITTAL  
 09/03/2015 100% CONSTRUCTION DOCUMENTS

CLIENT:  
 BUTLER ENTERPRISES  
 PROJECT:  
 POD C AT BUTLER NORTH  
 SHEET TITLE:  
 DETAILED GRADING AND  
 DRAINAGE PLAN

DESIGNER:  
 D.J.S.  
 CHECKER:  
 H.A.S.  
 QUALITY CONTROL:  
 R.W.  
 PROJECT NUMBER:  
 14-0469

SHEET NO.:  
 C2.13

FL PE No. 58206

14-0469